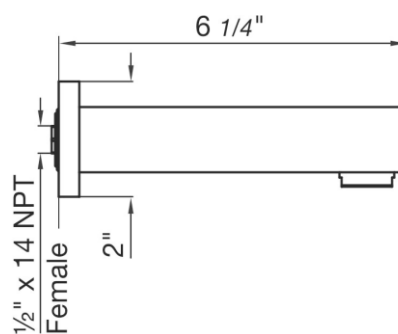
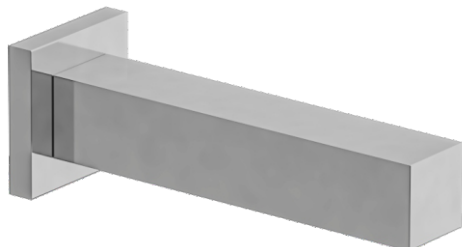


DOMINO - FV103/85.17.0

Tub wall spout 1/2" Fem NPT connection.
Pico salida.

FRANZ
VIEGENER



FEATURES CARACTERÍSTICAS

- All brass construction.
Producto realizado íntegramente en latón.

FLOW RATE CAUDAL

- Maximum flow rate 1.6 gpm (6,0 l/min) at 20 PSI (1,4 kg/cm²)
Caudal máximo 1.6 gpm (6,0 l/min) tomado a 20 PSI (1,4 kg/cm²)

COLOR / FINISHES COLOR / ACABADOS



ITEM DETAILS DETALLE DE PRODUCTO

COMPLIANCE CERTIFICACIONES

