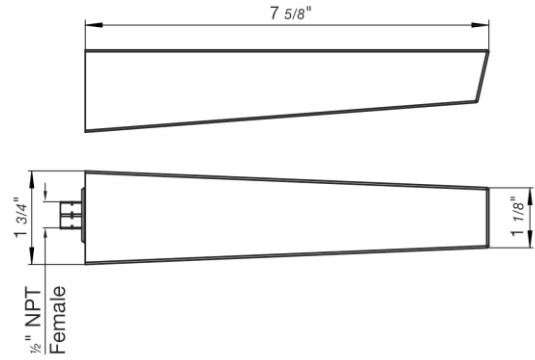
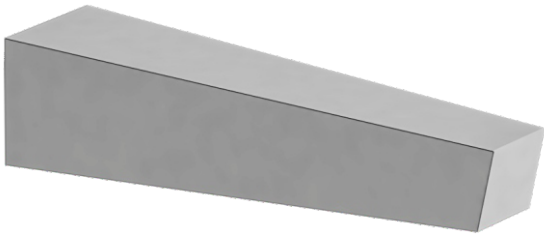


# BUZZ - FV103/J8.17.0

Tub wall spout 1/2" Fem NPT connection.  
Pico salida.

FRANZ  
VIEGENER



## FEATURES

### CARACTERÍSTICAS

- All brass construction.  
Producto realizado íntegramente en latón.

## FLOW RATE

### CAUDAL

- Maximum flow rate 16,2 gpm (61,2 L/min) at 58 PSI (4 kg/cm<sup>2</sup>)  
Caudal máximo 16,2 gpm (61,2 L/min) tomado a 58 PSI (4 kg/cm<sup>2</sup>)

## COLOR / FINISHES

### COLOR / ACABADOS



PC  
Polished Chrome.



PN  
Polished Nickel - PVD



BN  
Brushed Nickel - PVD



BG  
Brushed Gold - PVD



PG  
Polished Gold - PVD



RG  
Rose Gold - PVD



FB  
Flat Black.



BK  
Black - PVD



SGR  
Satin Greystone - PVD



UPB  
Unlacquered  
Polished Brass.



BB  
Brushed Brass - PVD



PB  
Polished Brass - PVD

## ITEM DETAILS

### DETALLE DE PRODUCTO

## COMPLIANCE

### CERTIFICACIONES



C<sup>®</sup>