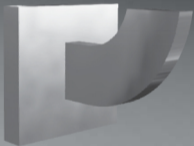


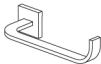
accessories domino

Installation

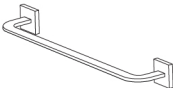


FRANZ
VIEGENER

Accessories Domino Line



Short Towel bar
FV162/J4



Towel bar
FV164/J4 (17 11/16")
FV164.01/J4 (23 5/8")
FV164.02/J4 (29 1/2")

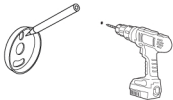


Robe hook
FV166/J4



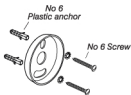
Toilet roll holder
FV167/J4

Installation instructions

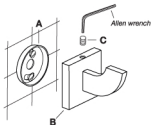


1_Using the support (in the position the figure shows), mark the place where you will drill the first hole to mount the accessory.

2_Make the necessary hole for No 6 plastic anchor.



3_Affix the support to the wall using the screws and the plastic anchors provided. Repeat the procedure (1 and 2) to complete the fixation of the support.

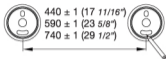


4_Place the accessory (B) over the support (A), keeping all pressed to the wall.

Tighten the set-screw (C) with the Allen wrench provided.

Accessories with two supports

Assembling

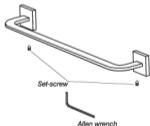


For accessories such as towel bars, please bear in mind the following:



a_Mark the distance between both supports before you start. Make sure the holes are at the same height.

b_Follow previous instructions (1, 2 and 3) for affixing the supports.



c_Put the complete set together, and tighten the supports (see picture).