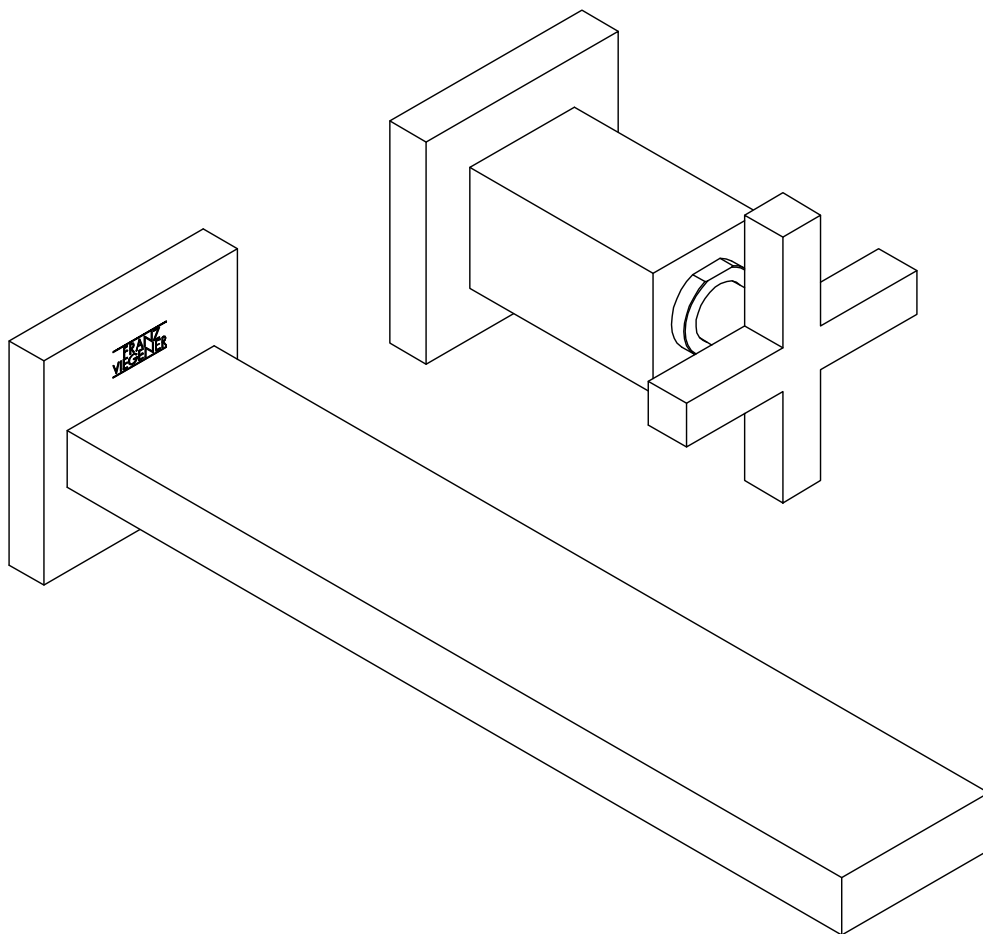


Before connecting the faucet to the water supply, flush the tubing thoroughly to eliminate any residue/  
Antes de conectar la grifería a la distribución de agua, purgue muy bien la cañería a fin de eliminar partículas extrañas.

Progressive Cartridge Wall Mounted Single Handle Lavatory Faucet - trim only /  
Conjunto decorativo para lavatorio monocomando de pared con cartucho progresivo  
**FV209/85.0**  
**FV209/85L.0**





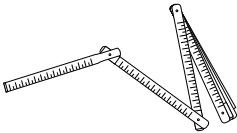
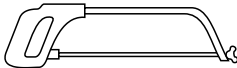
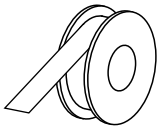
# Dominic *plus* Wall-mounted lavatory set - Line 85

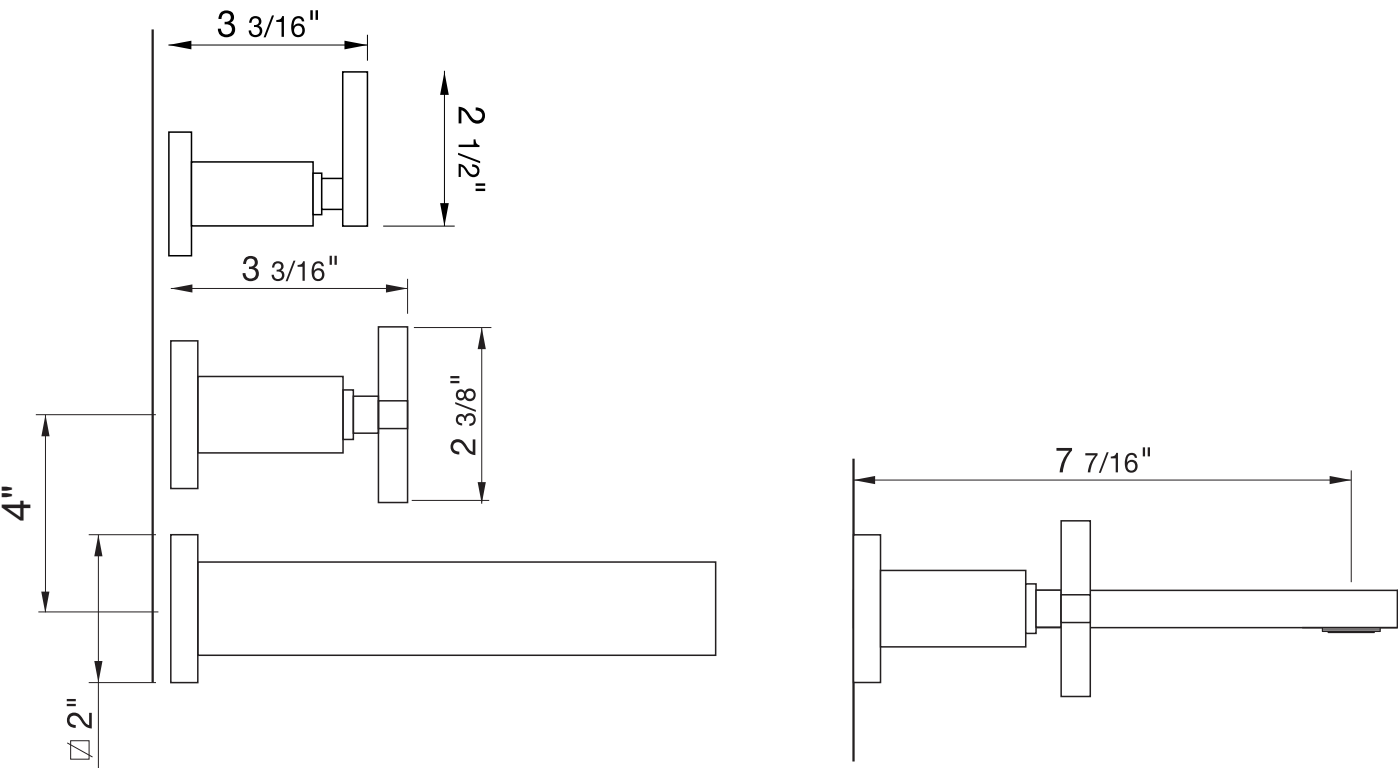
## CONGRATULATIONS !

This product has been subjected to stringent tests for its quality, performance and finish. We guarantee years of trouble free operation. We thank you for your choice and above all for the trust you are placing in us. This trust is what motivates us to improve every day.

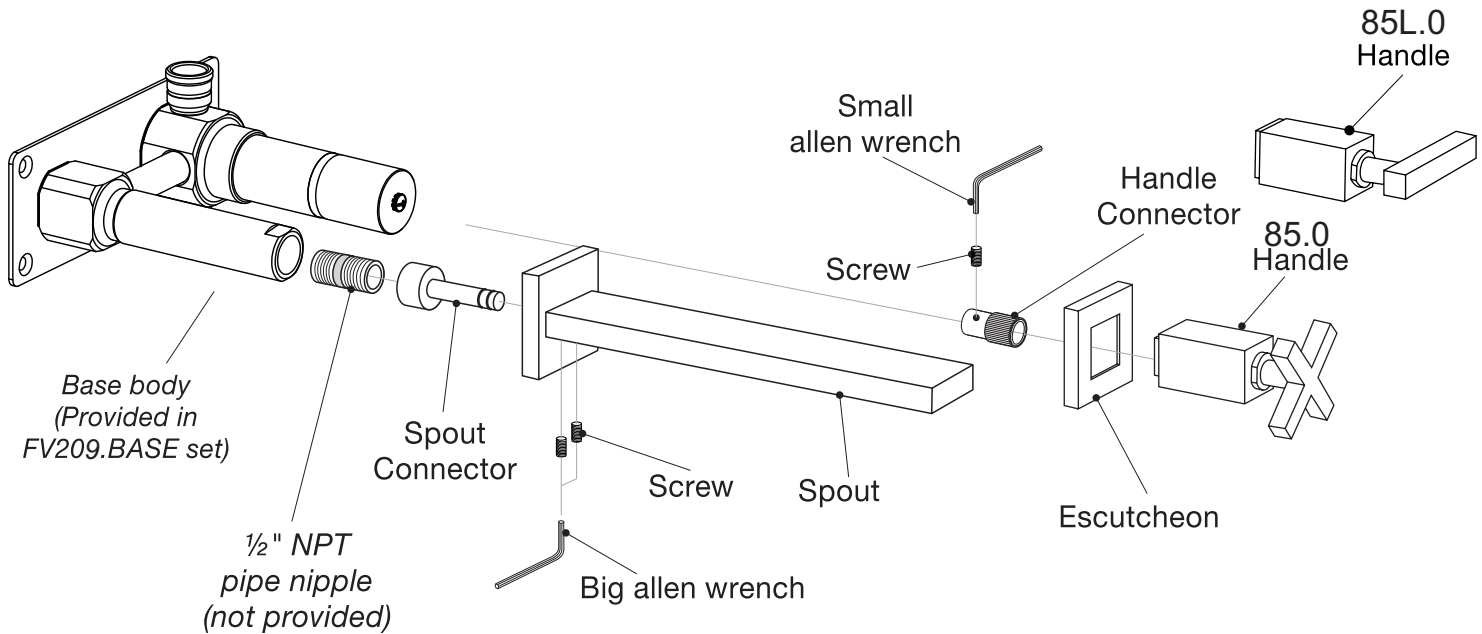
Before connecting the faucet to the water supply, flush the tubing thoroughly to eliminate any residue.

## Required instalation tools

Provided	Not provided
<div> Allen wrench (two different sizes)</div> <div> Handle fixation wrench</div>	<div> Ruler</div> <div> Hacksaw</div> <div> Teflon tape</div>



# Dominic *plus* Wall-mounted lavatory set - Line 85



## Installation Instructions

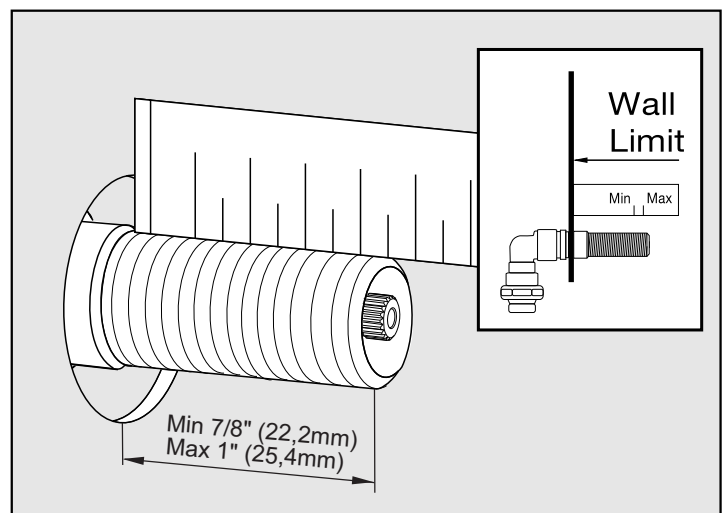
1- Make sure to place the valve with supply inlets pointed downward. The brass extension is already threaded onto the FV209.BASE body. It can be removed and trimmed using a saw along the provided groove, if necessary.

## Handle instalation:

2 - Once the valve's placed, use a ruler to check and measure the maximum and minimum distances.

*If the min/max is correct continue directly to point 4.*

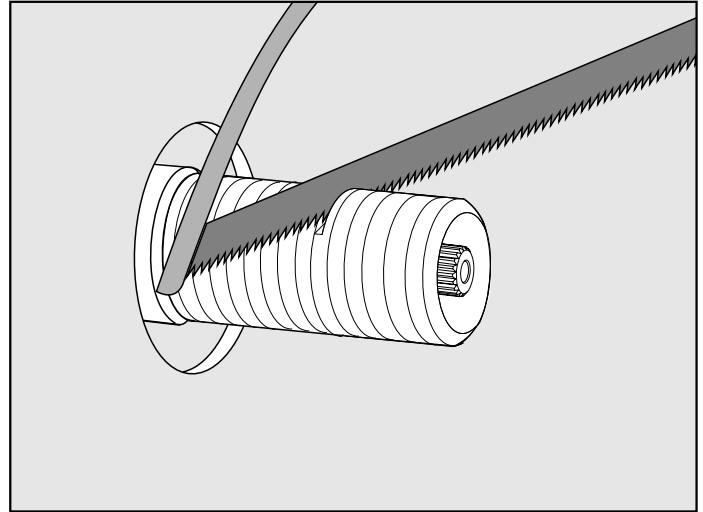
*\*Maximum and minimum distances are in millimeters, measurements in inches are for reference only.*



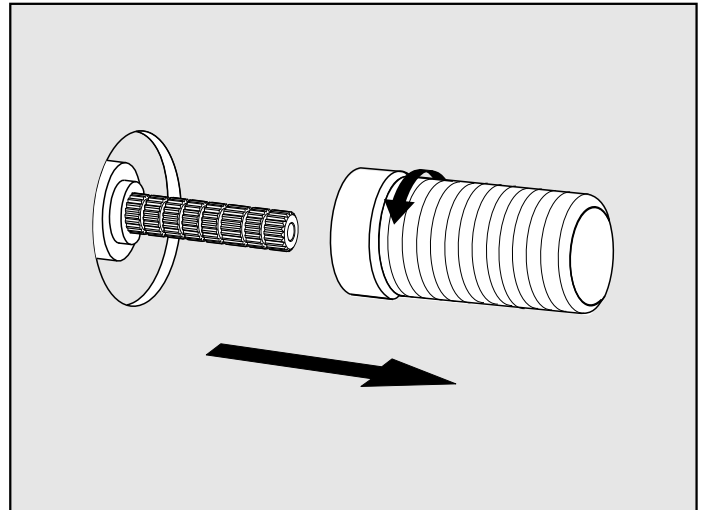
3 - **If the measured distance exceeds the “max” value it’s necessary to trim brass extension and valve stem (together).**

*Both parts are trimable with hacksaw.*

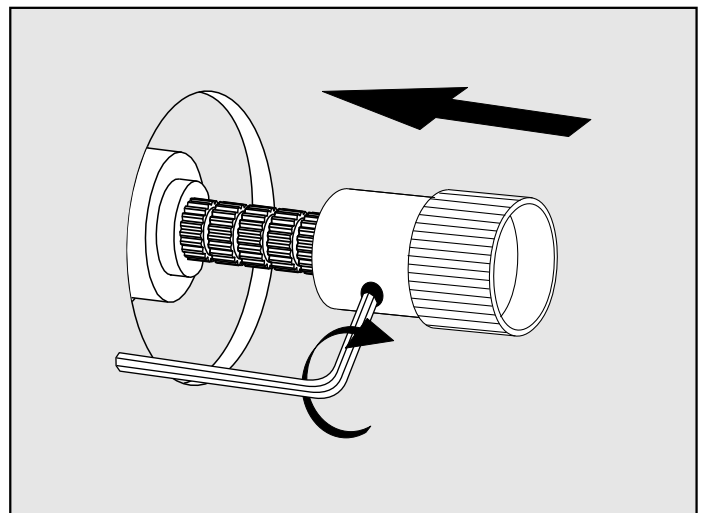
*\*Optional extension kit (not included) to use when valve is installed deeper than normal. Contact your dealer to purchase extension kit.*



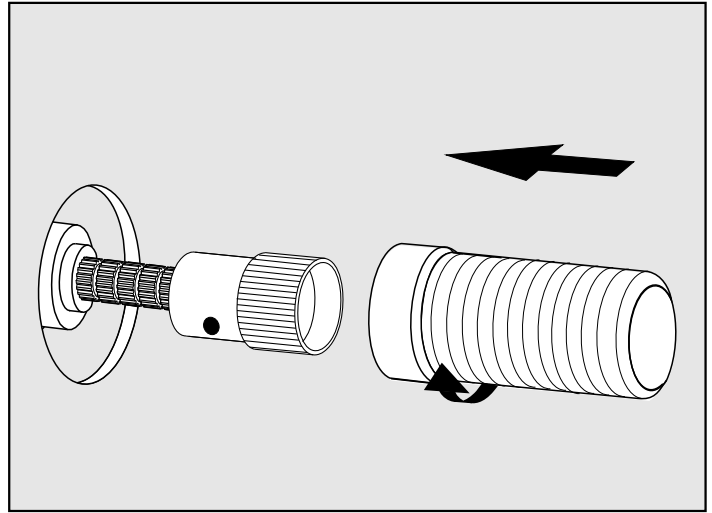
4 - Remove the brass extension.



5- Place the connector and tighten it with the provided small allen wrench as shown in the picture.



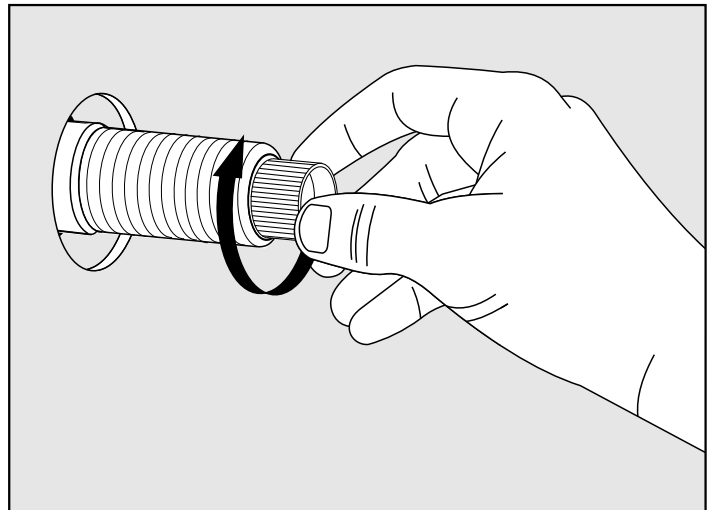
6 - After tightening the connector, place the brass extension.



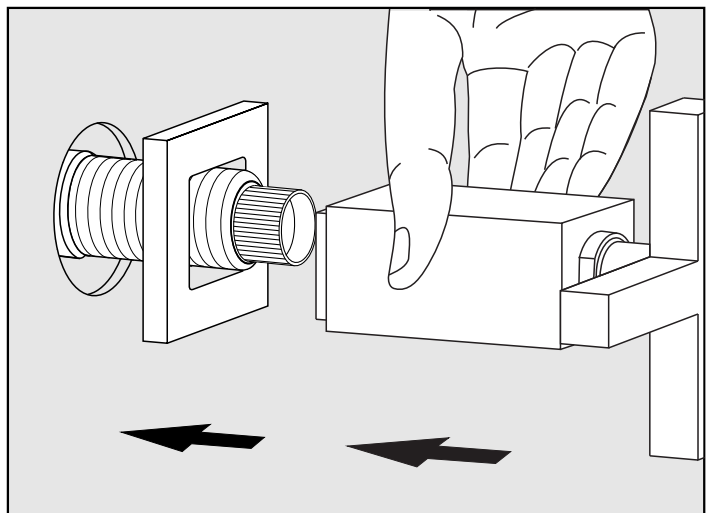
7 - Once adjusted the brass extension, put the valve on its “off” position.

-To close “hot” valve turn clockwise

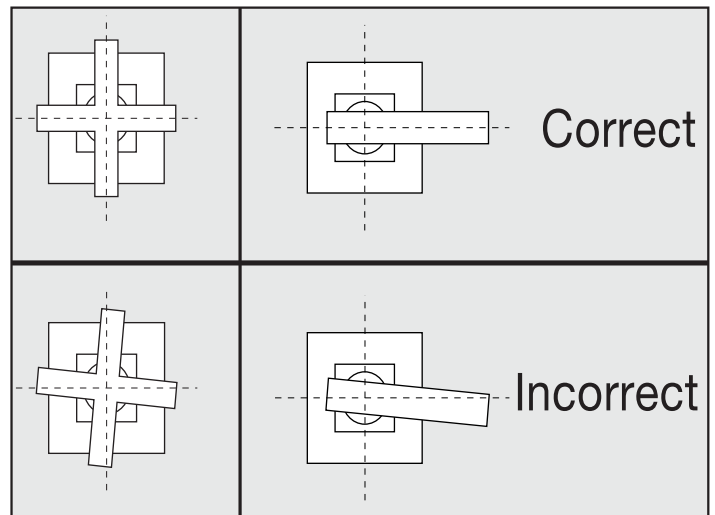
-To close “cold” valve turn counter clockwise



8- Place escouthcheon and handle on the brass extension.

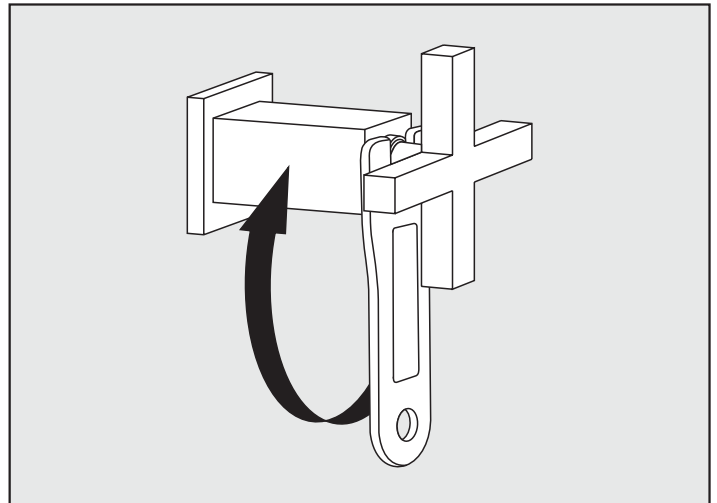


9 - After placing the handle you must control the installation position (see picture).



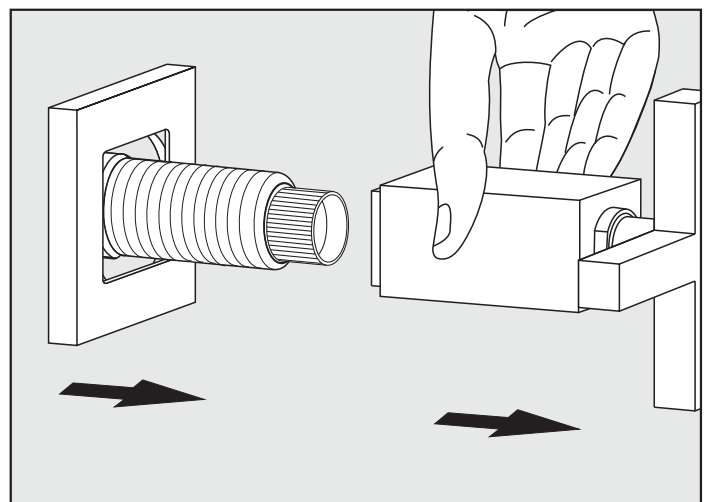
10 -Once the handle is on position, use the provided wrench to adjust the escutcheon.

*Make sure the escutcheon matches paralelly with the handle.*

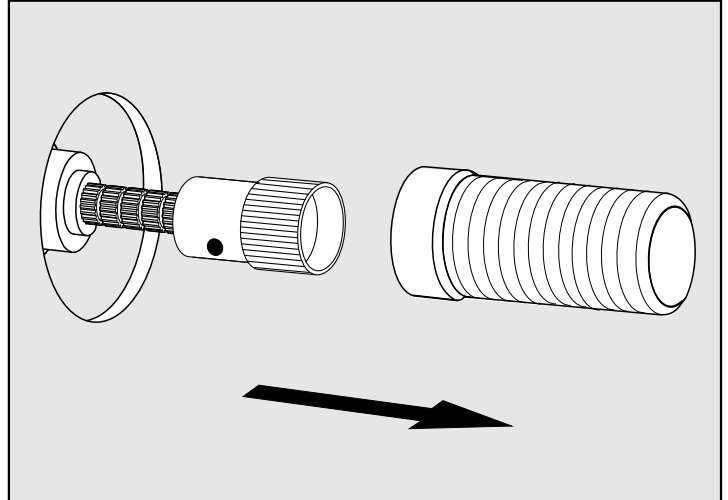


### **To correct handle position:**

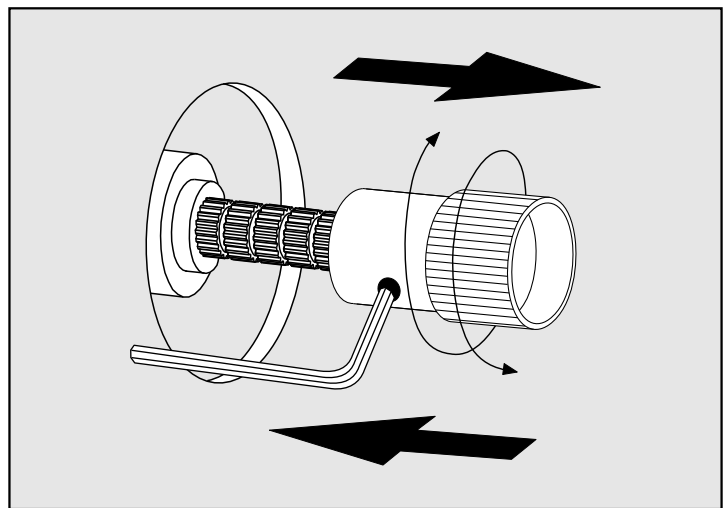
11 - If the handle isn't in the correct position remove it.



12- Remove also the brass extension.



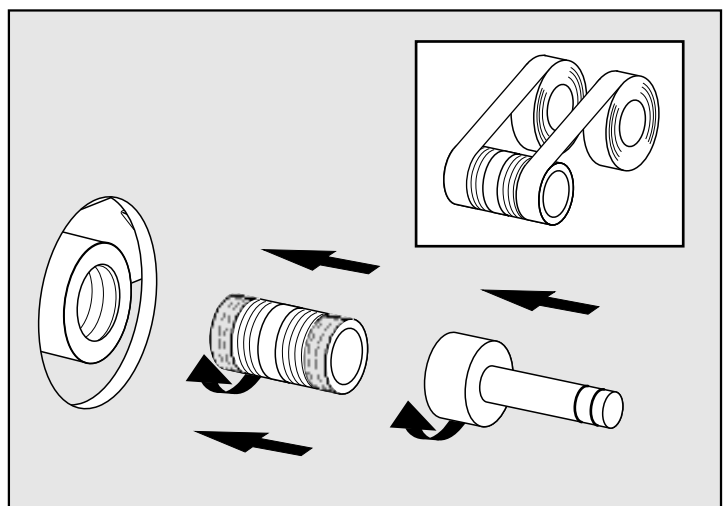
13- Remove, rotate, and reinstall the connector. And restart since point 6.



### **Spout instalation:**

14 - Use the ½" NPT pipe nipple connector to engage the FV209.BASE body with the spout connector.

*Remember to apply sealant tape to the pipe niple.*



## Dominic *plus* Wall-mounted lavatory set - Line 85

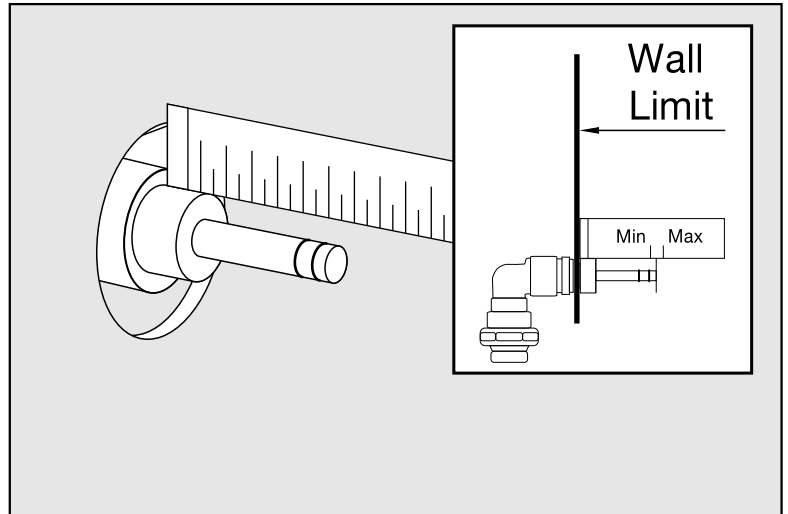
15 - Once placed the spout connector use a ruler to check the installation distance against the wall.

*MIN:* 1 1/4" (32 mm)

*MAX:* 1 3/4" (45 mm)

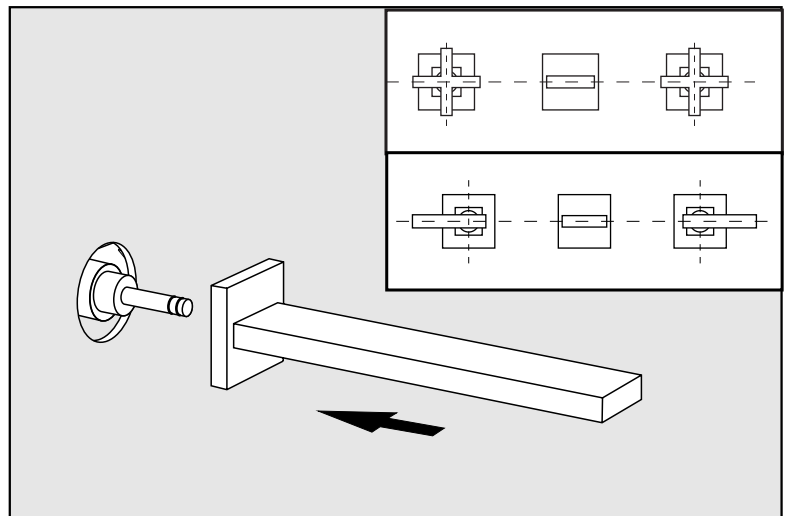
*According to the measured distance could be necessary to choose other size of the "NPT pipe nipple" (not provided).*

*\*Maximum and minimum distances are in millimeters, measurements in inches are for reference only.*

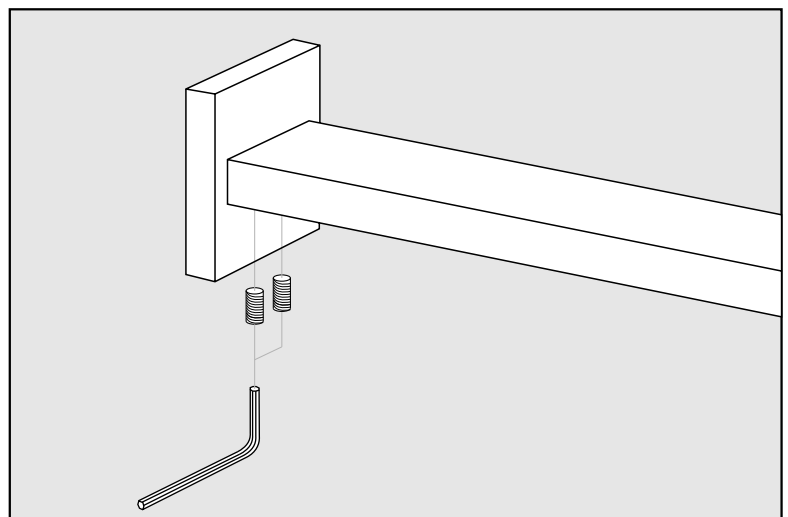


16 - To install the spout place it on the spout connector (is not necessary to thread it).

*Make sure the spout matches paralely with the horizontal line wich was used to place all the pieces of the FV209/85.0 set.*



17- Once the spout is on the wished position, tight it with the big allen wrench using the screws located on the lower face of the spout, near to the escutcheon.





**Notas / Notes**

[illegible]

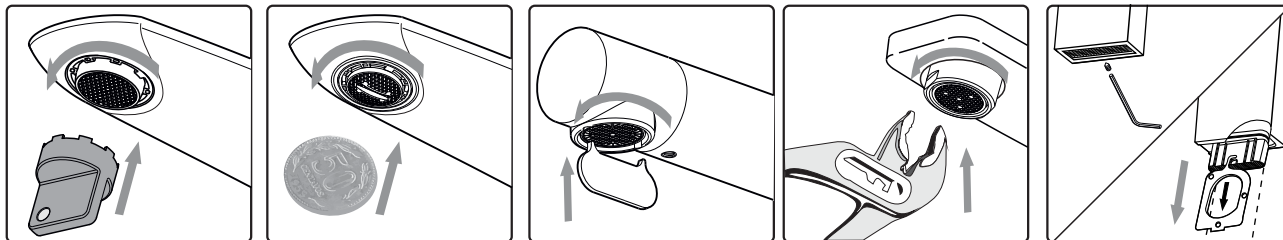
**Notas / Notes**

[illegible]

## Notas / Notes

[illegible]

## Aerator cleaning

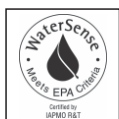
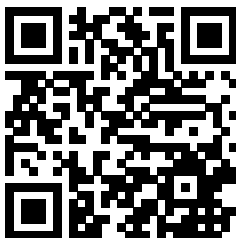


Place the corresponding tool according to the type of aerator you have and remove it. Wash it under a stream of water. If there is any sediment, place it in a glass of vinegar during the night. Put it back the next day.



**Attention! Do not** use sharp objects to unblock the aerator

**WARRANTY:** For more information please visit <https://franzviegenger.com/warranty/>



**FRANZ VIEGENER Customer Service Department (800) 446-9700**

Phone 847-244-3837 / Fax 847-249-4049 - [info@franzviegenger.com](mailto:info@franzviegenger.com)

4000 Porett Drive - Gurnee, IL, 60031-USA.

Follow us on social media!



Scan the code  
to get more  
information  
about this line.

**[www.franzviegenger.com](http://www.franzviegenger.com)**

FRANZ VIEGENER reserve the right to make revisions without notice in the design of faucets and bathroom accessories or in packaging.  
FO-FV209/85.0 / August 2023