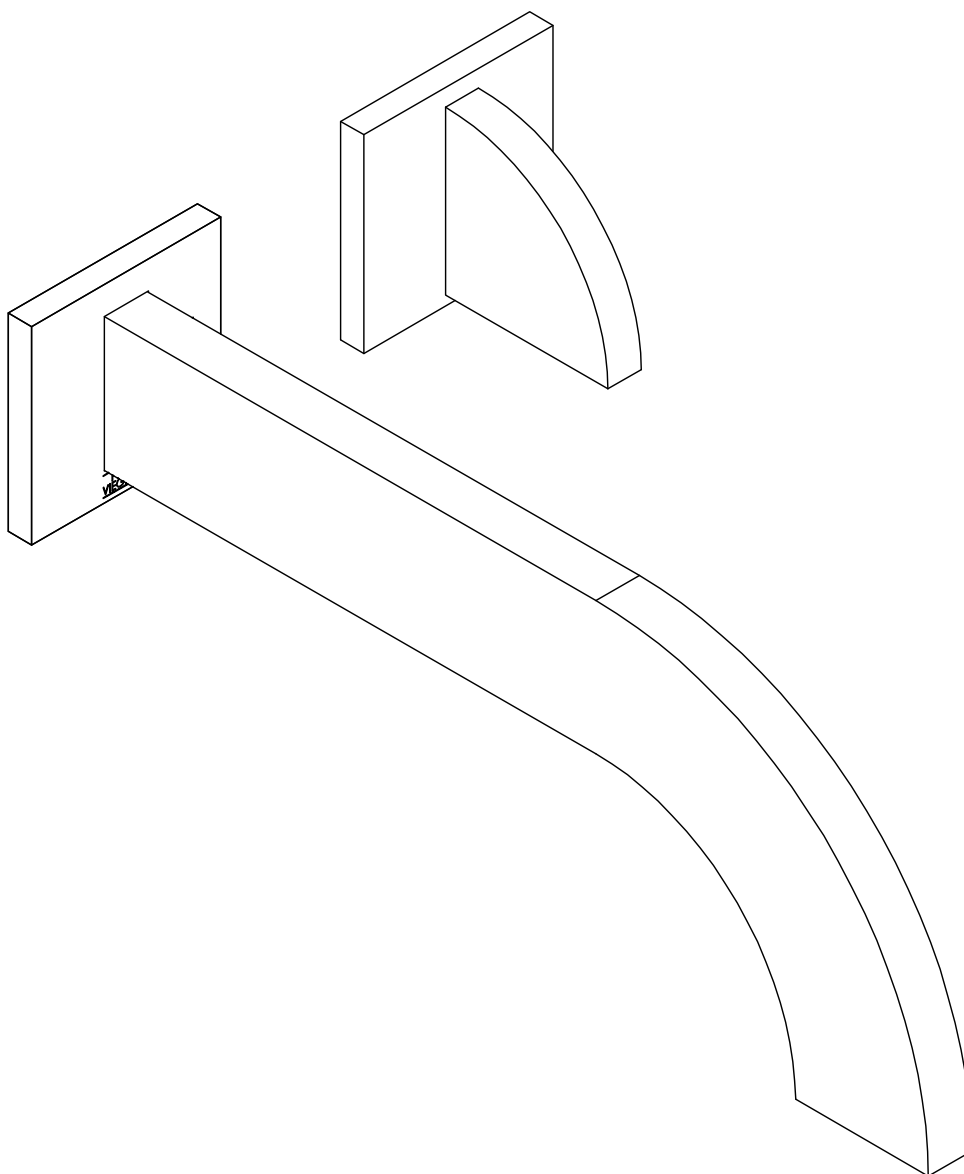


Installation and maintenance / Instalación y mantenimiento

Before connecting the faucet to the water supply, flush the tubing thoroughly to eliminate any residue/
Antes de conectar la grifería a la distribución de agua, purgue muy bien la cañería a fin de eliminar partículas extrañas.

Progressive Cartridge Wall Mounted Single Handle Lavatory Faucet - trim only /
Conjunto decorativo para lavatorio monocomando de pared con cartucho progresivo

FV209/J3.0
FV209/J3D.0



Edge -Wall-mounted lavatory set. Trim only - Line J3 & J3D


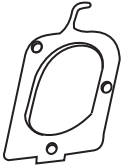
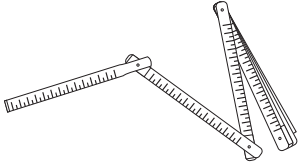
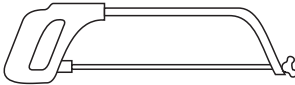
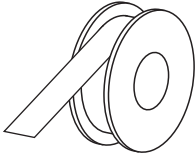
CONGRATULATIONS !

This product has been subjected to stringent tests for its quality, performance and finish.
We guarantee years of trouble free operation.

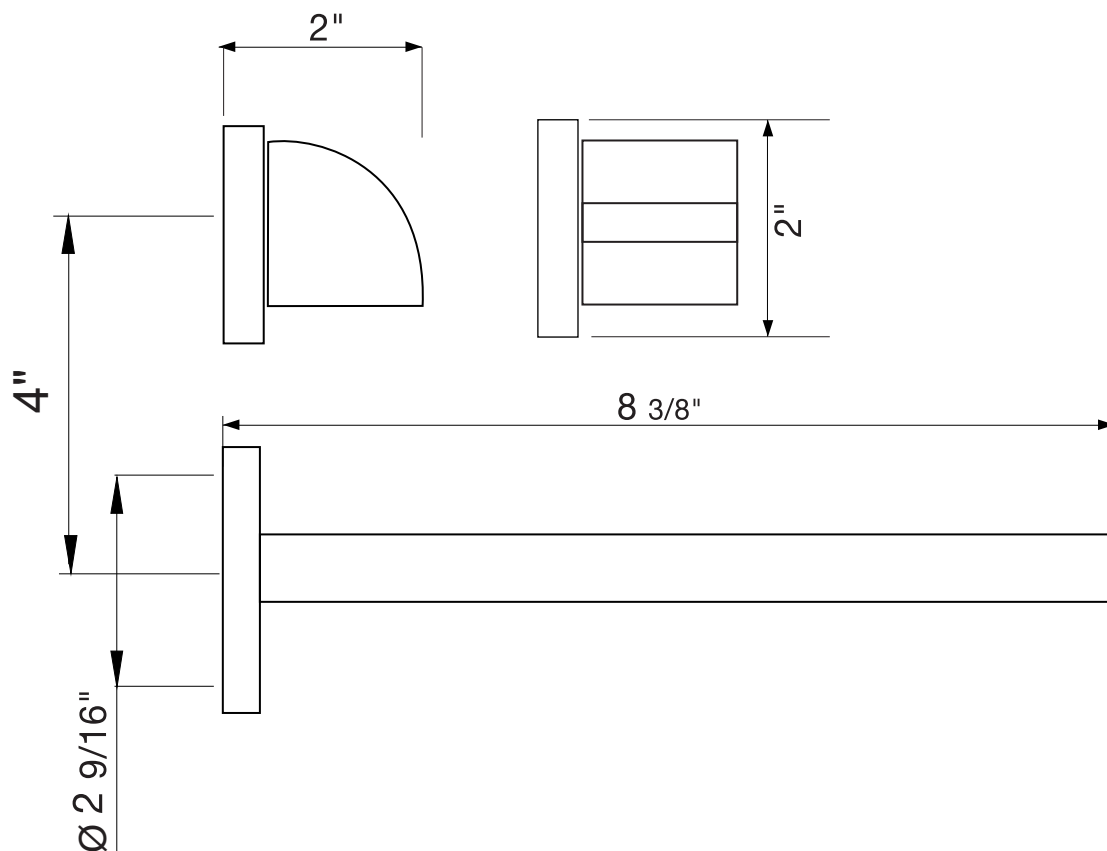
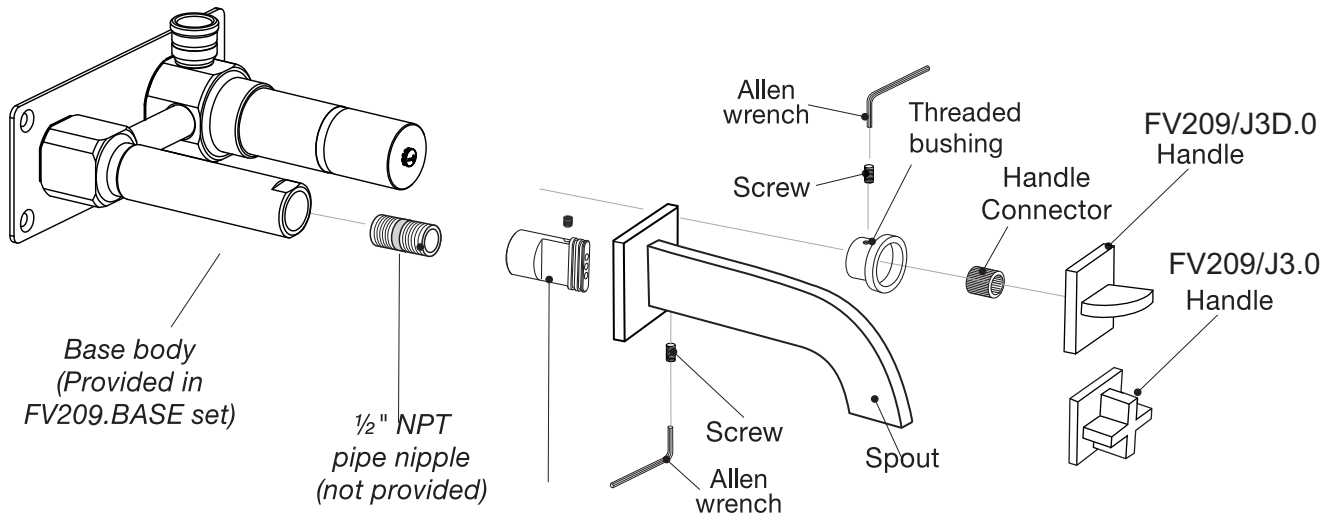
We thank you for your choice and above all for the trust you are placing in us. This trust
is what motivates us to improve every day.

Before connecting the faucet to the water supply, flush the tubing
thoroughly to eliminate any residue.

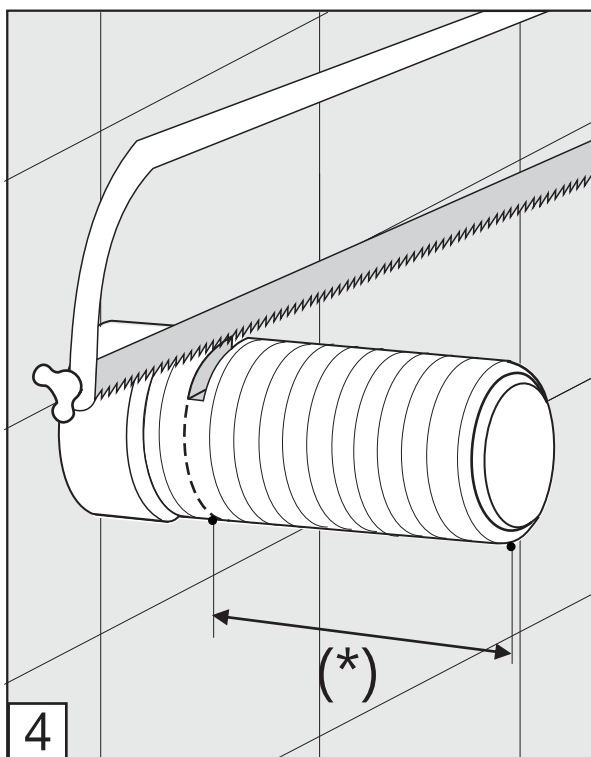
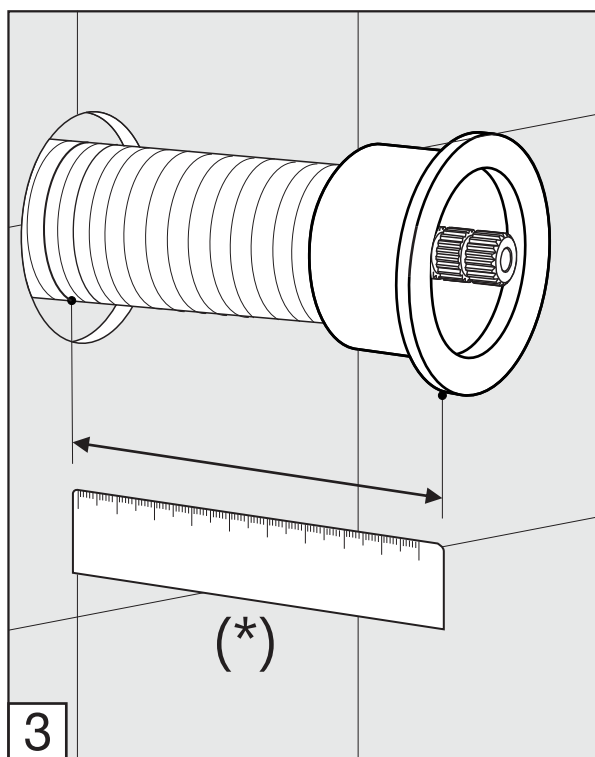
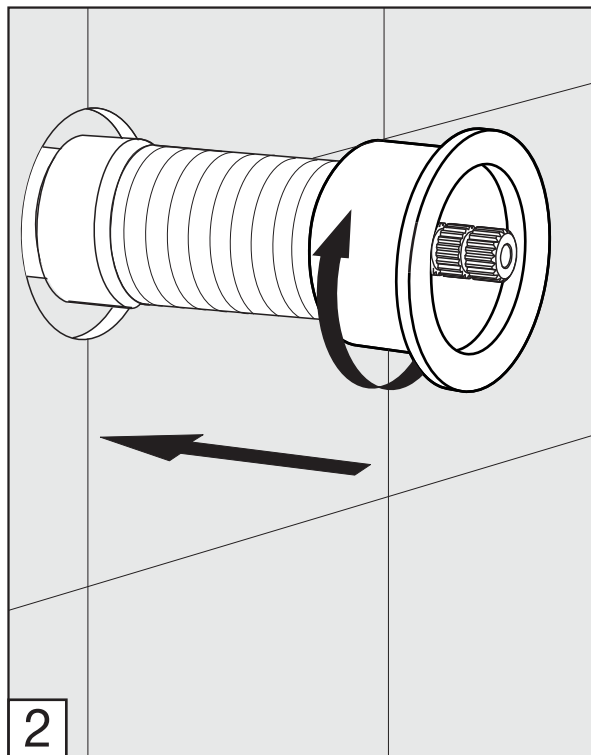
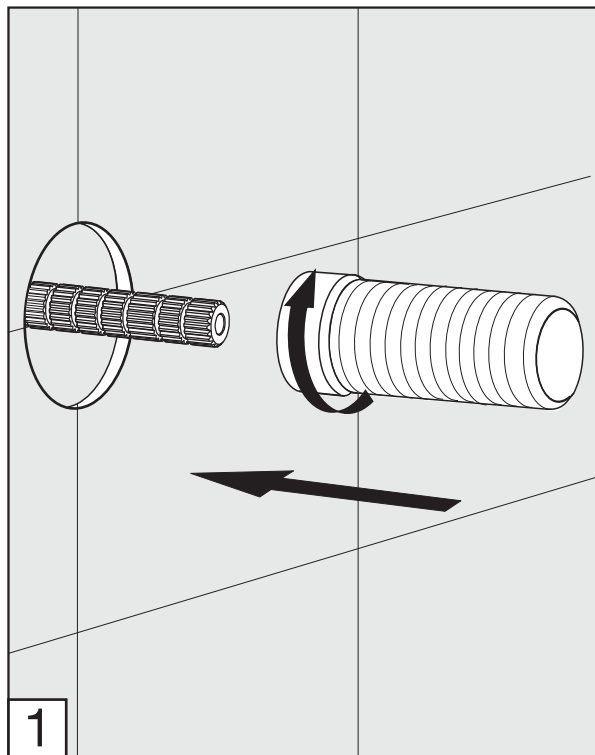
Required installation tools.

Provided	Not provided		
			
Allen wrench			
			
Aerator tool	Ruler	Hacksaw	Teflon tape

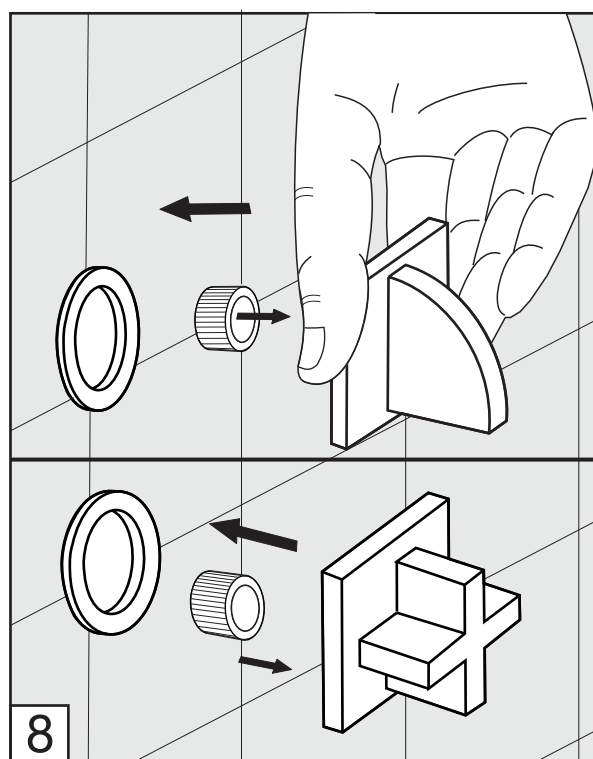
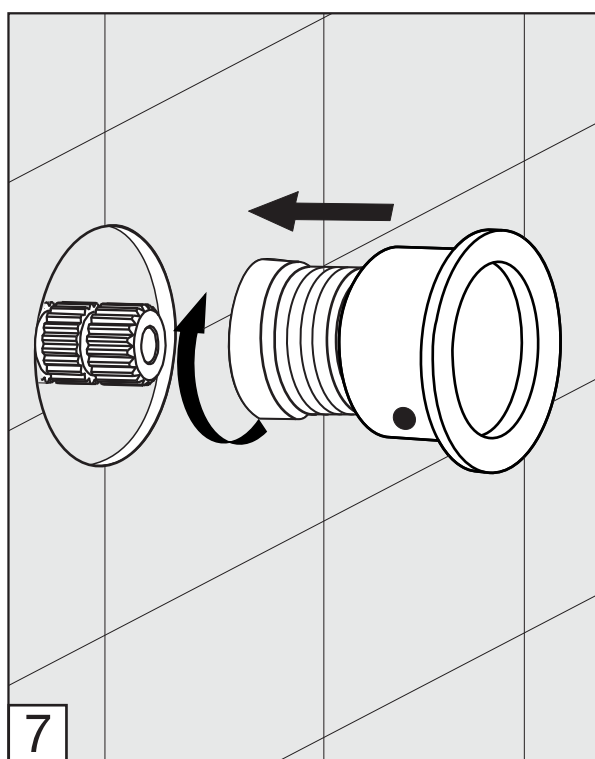
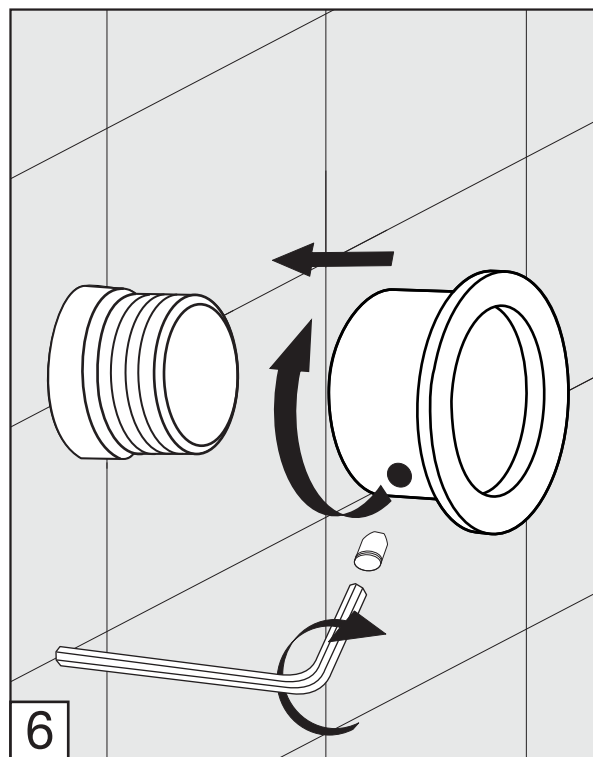
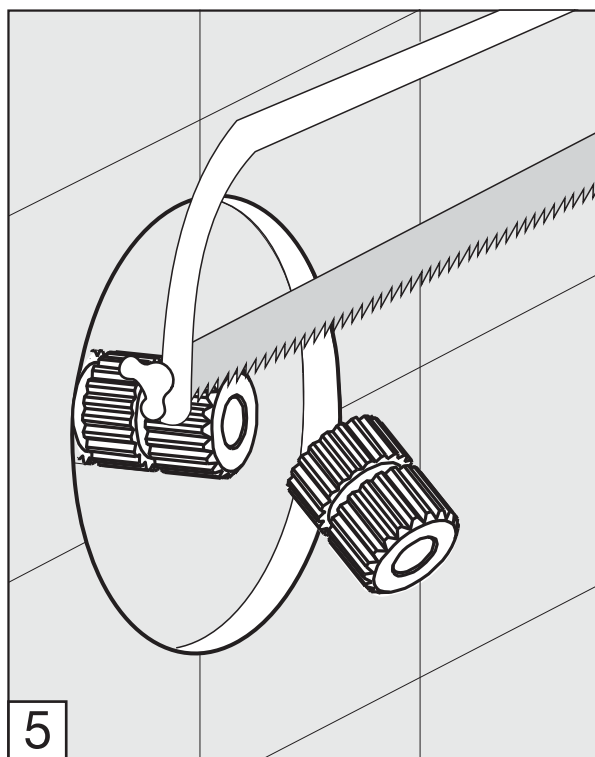
Edge -Wall-mounted lavatory set. Trim only - Line J3 & J3D



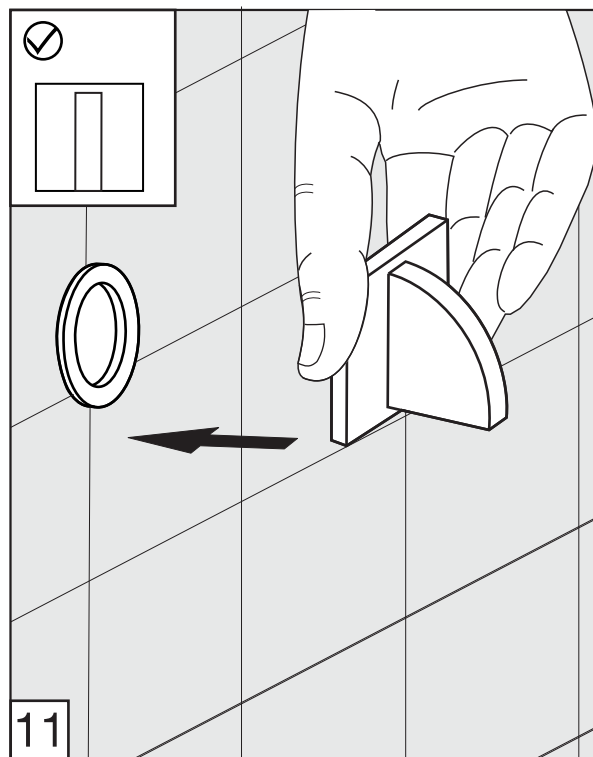
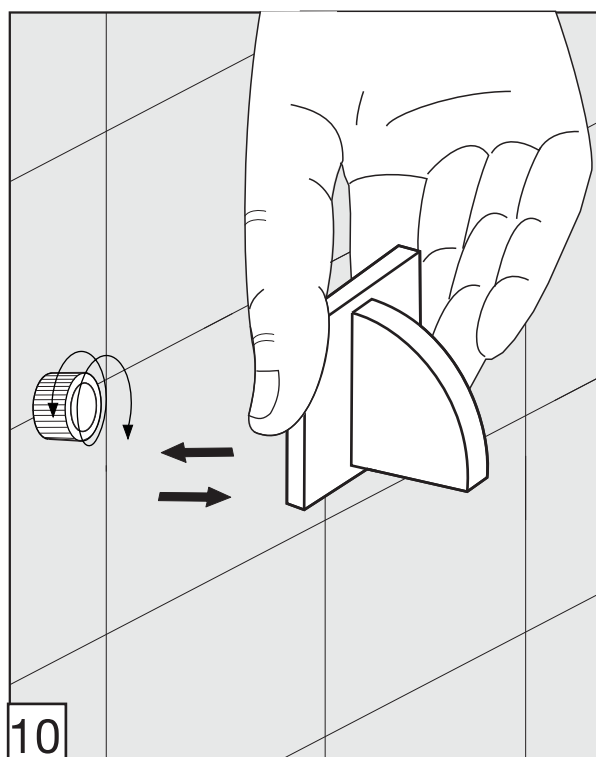
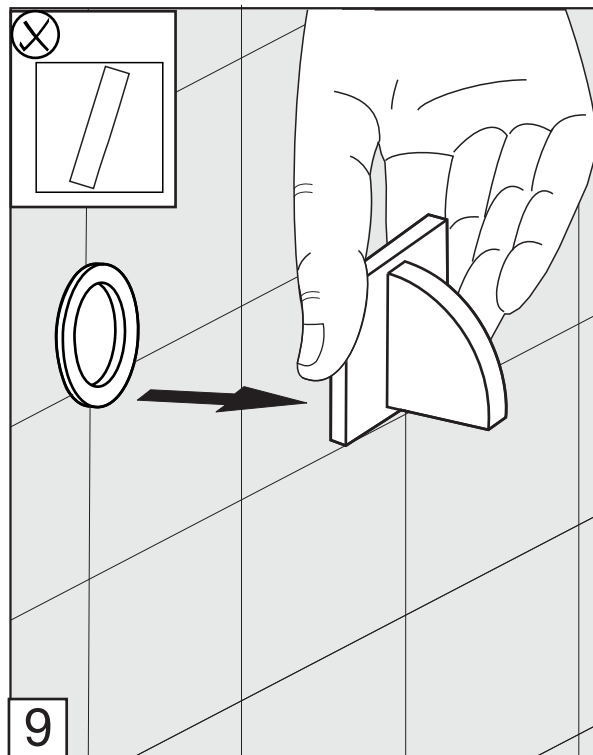
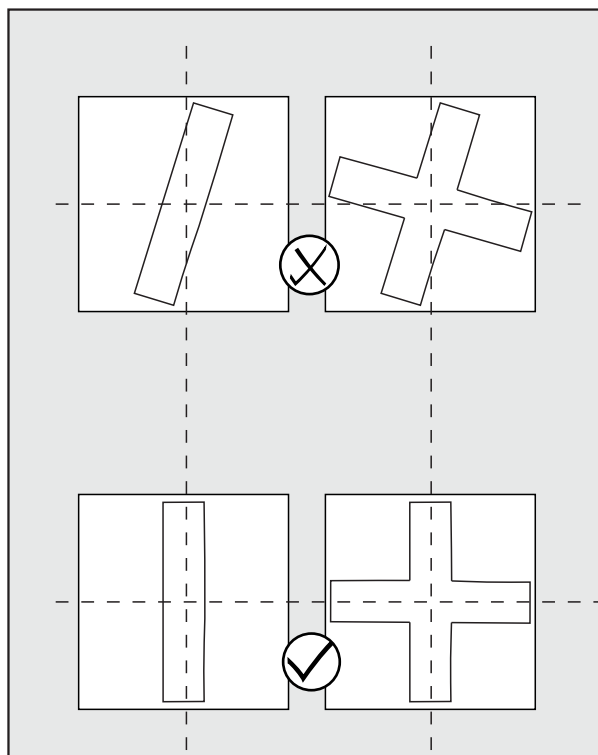
Handle installation:

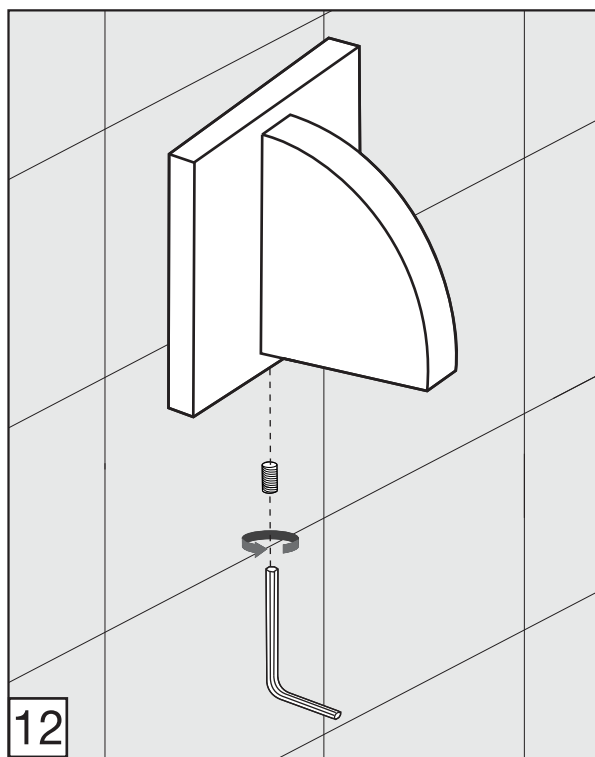


Edge -Wall-mounted lavatory set. Trim only - Line J3 & J3D

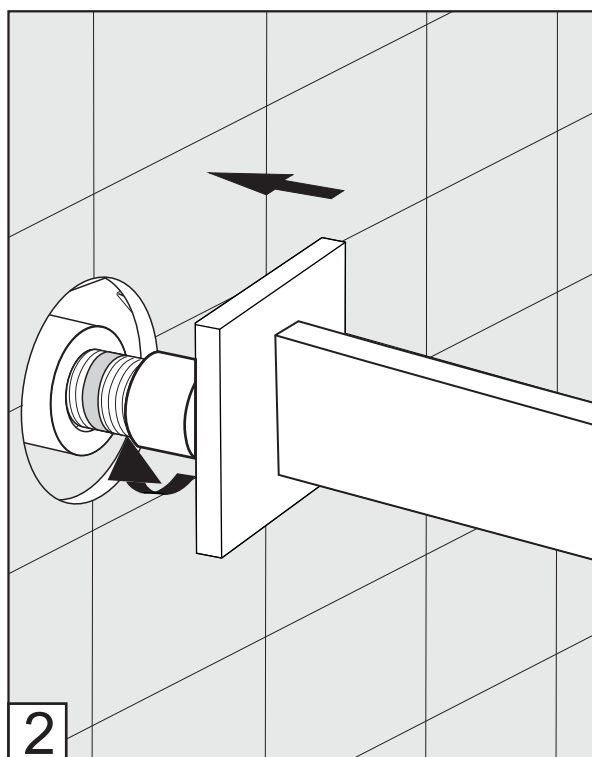
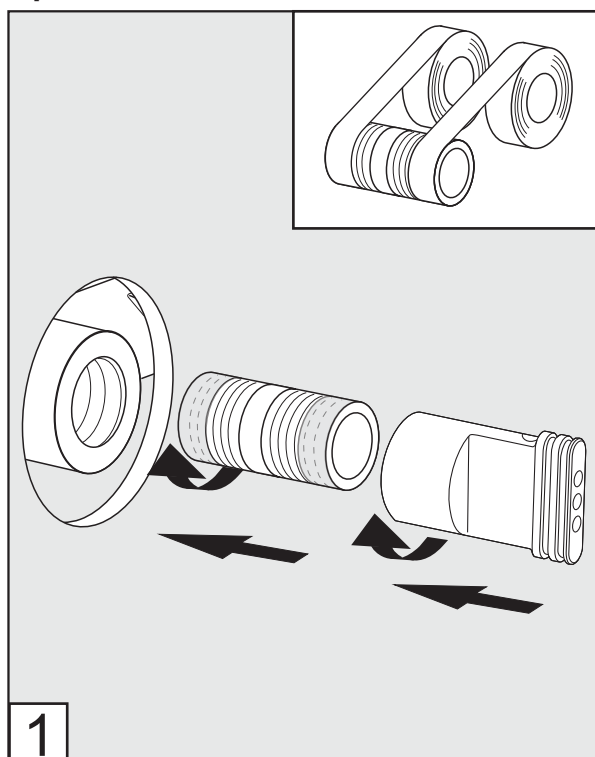


Edge -Wall-mounted lavatory set. Trim only - Line J3 & J3D

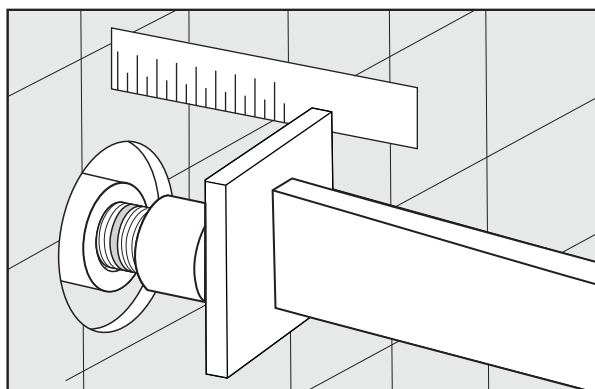




Spout installation:



Edge -Wall-mounted lavatory set. Trim only - Line J3 & J3D



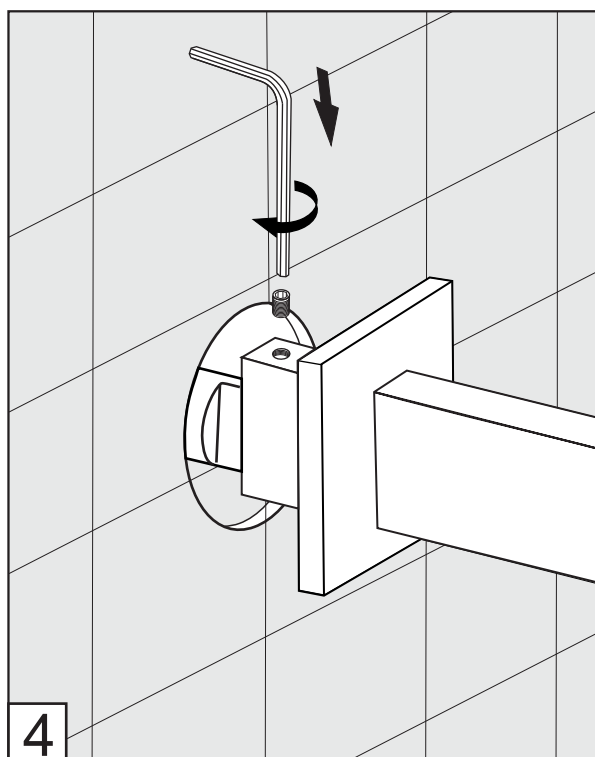
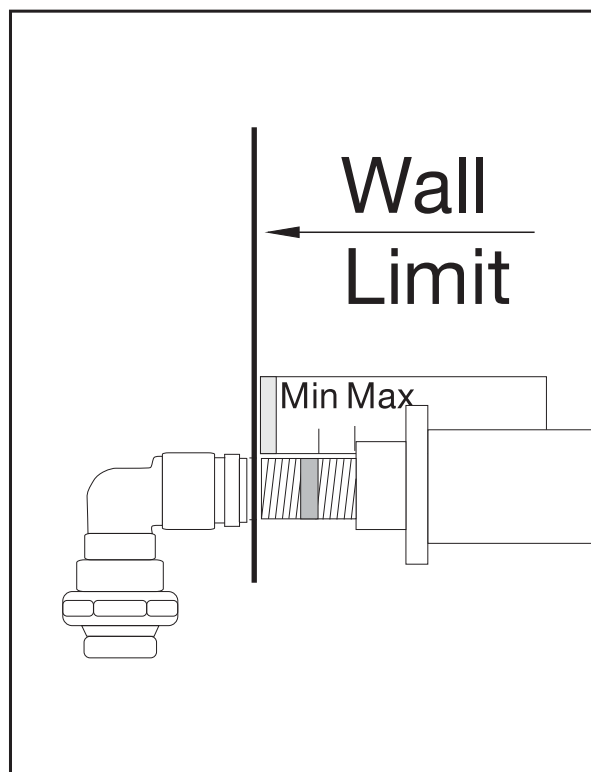
MIN: 1 1/16" (27 mm)

MAX: 1 5/16" (33 mm)

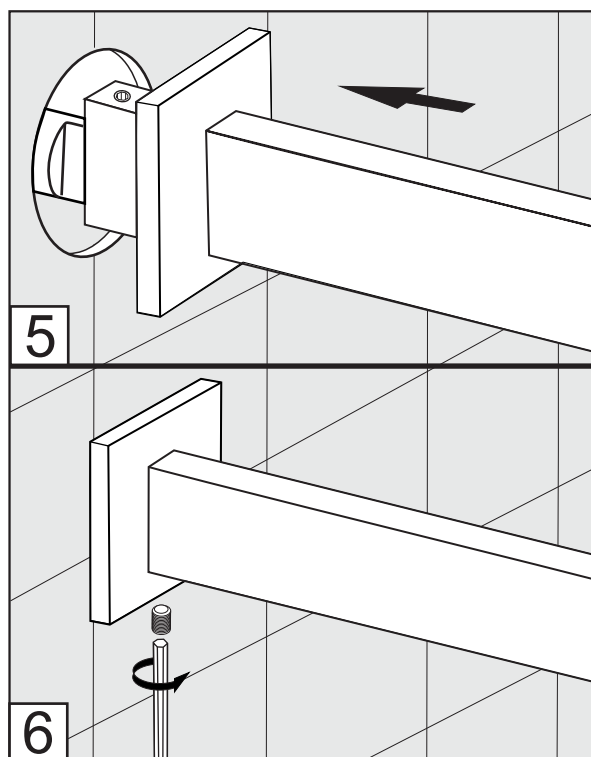
According to the measured distance
could be necessary to choose other size
of the "NPT pipe nipple" (not provided).

*Maximum and minimum distances are in millimeters,
measurements in inches are for reference only.

3



4



5

6

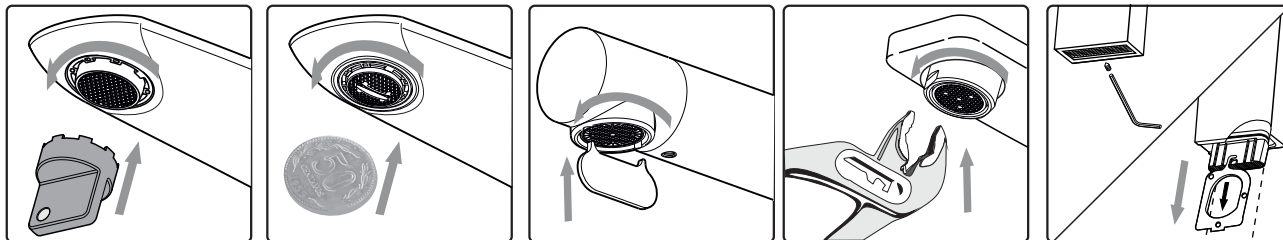
[illegible]

[illegible]

NOTES

[illegible]

Aerator cleaning

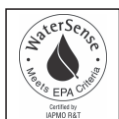
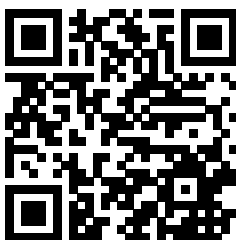


Place the corresponding tool according to the type of aerator you have and remove it. Wash it under a stream of water. If there is any sediment, place it in a glass of vinegar during the night. Put it back the next day.



Attention! Do not use sharp objects to unblock the aerator

WARRANTY: For more information please visit <https://franzviegenger.com/warranty/>



FRANZ VIEGENER Customer Service Department (800) 446-9700

Phone 847-244-3837 / Fax 847-249-4049 - info@franzviegenger.com

4000 Porett Drive - Gurnee, IL, 60031-USA.

Follow us on social media!



Scan the code
to get more
information
about this line.

www.franzviegenger.com

FRANZ VIEGENER reserve the right to make revisions without notice in the design of faucets and bathroom accessories or in packaging.
FO-FV209/J3.0 / August 2023